



CYNOSURE®

SculpSure®

PERMANENT FAT REDUCTION\*



# SMARTER TECHNOLOGY FOR TREATING SUBMENTAL FAT

## PETITE & STANDARD MASK

SculpSure treatments are FDA cleared for non-invasive lipolysis of submental fat including individuals with a BMI up to 49. The device can also affect the appearance of lax tissue in the submental area\*.



### SUBMENTAL

*Before, and 12 weeks after 2nd SculpSure series. Courtesy of B. Katz, MD*



### SUBMENTAL

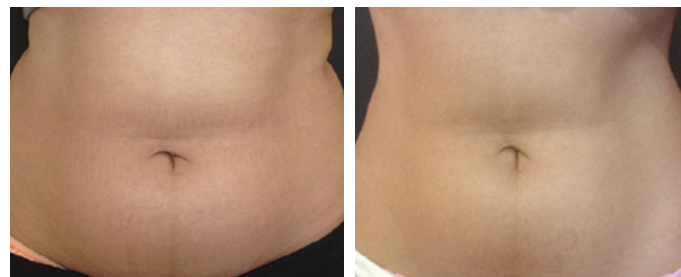
*Before, and 12 weeks after 2nd SculpSure series. Courtesy of B. Katz, MD*

# SCULPTING YOUR PATIENT'S IDEAL BODY

## GUIDED MODE TECHNOLOGY

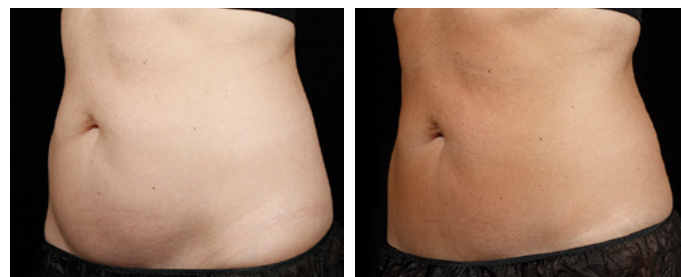
Guided Mode Technology for body treatments provides a preset algorithm for energy titration resulting in a controlled increase in temperature to achieve lipolysis of the fat cells.

The software provides an assisted treatment with measured and consistent power changes resulting in a more comfortable treatment session with no compromise to efficacy.



### ABDOMEN & FLANKS

*Before, and 12 weeks after 2nd SculpSure series. Courtesy of D. Marciano, MD*



### ABDOMEN & FLANKS

*Before, and 6 weeks after 2nd SculpSure series. Courtesy of S. Doherty, MD*

“ Our patients have been extremely pleased with SculpSure's revolutionary approach to non-invasive reduction of submental fat. Treatments are comfortable, without downtime and with excellent results. ”

— BRUCE KATZ, MD

Using laser technology for non-invasive body contouring provides numerous advantages over other modalities including:

- FASTER TREATMENT TIMES
- NATURAL LOOKING RESULTS FROM FEATHERING OF HEAT SPREAD
- COMFORTABLE AND WELL TOLERATED PROCEDURE<sup>3</sup>
- CAN BE USED ON ALL SKIN TYPES
- MILD AND TRANSIENT SIDE EFFECTS

# THE SMARTER TECHNOLOGY FOR NON-INVASIVE FAT REDUCTION

## SculpSure®

### HEAT TREAT YOUR PATIENT'S STUBBORN BODY FAT

**SculpSure body contouring is a breakthrough non-invasive hyperthermic laser technology, designed to safely and effectively eliminate unwanted fat cells.**

SculpSure is the world's first FDA cleared and TGA listed hyperthermic laser for non-invasive lipolysis of the submental (under the chin), abdomen, flanks, back, inner and outer thighs areas.

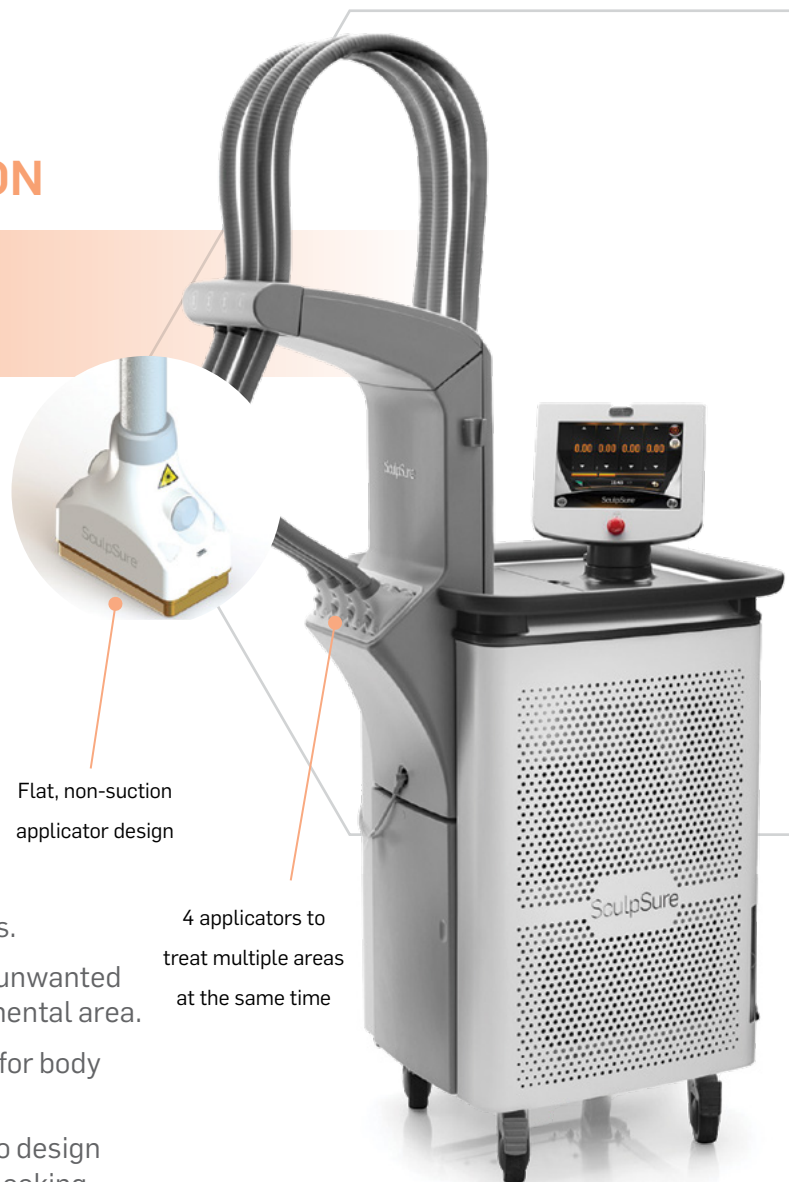
SculpSure treatments are customised to eliminate unwanted fat up to 24%<sup>1</sup> in body treated area and 23%<sup>2</sup> in submental area.

SculpSure is ideal for individuals with BMI up to 30<sup>1</sup> for body and BMI up to 49<sup>2</sup> for under the chin area.

This controlled light-based technology allows you to design a customised "Treat to Complete" plan for patients looking for a slimmer appearance, fast and effectively.

Flat, non-suction  
applicator design

4 applicators to  
treat multiple areas  
at the same time

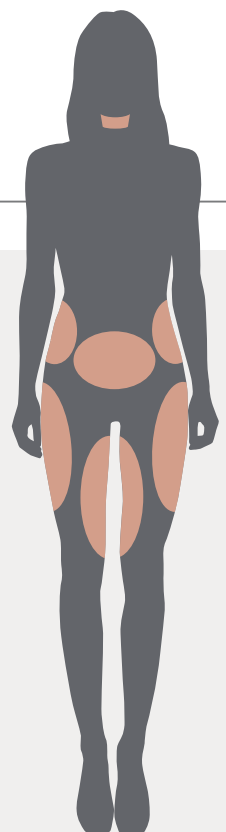


### SCULPSURE IS DESIGNED FOR YOUR SUCCESS

- **FASTER TREATMENTS**  
Multiple areas can be treated in 25 minute treatment sessions
- **VERSATILE NON-SUCTION APPLICATORS**  
Customise treatments for a variety of body areas and sizes with the 4 hands-free applicators
- **HIGH ROI**  
Increasing your practice revenues faster
- **CONSUMABLES**  
SculpSure utilises just one consumable for body and one for submental treatments
- **SCULPSURE PRODUCT SPECIALIST**  
Partnering with you to support growth of SculpSure.
- **EASY TO DELEGATE PROCEDURE**

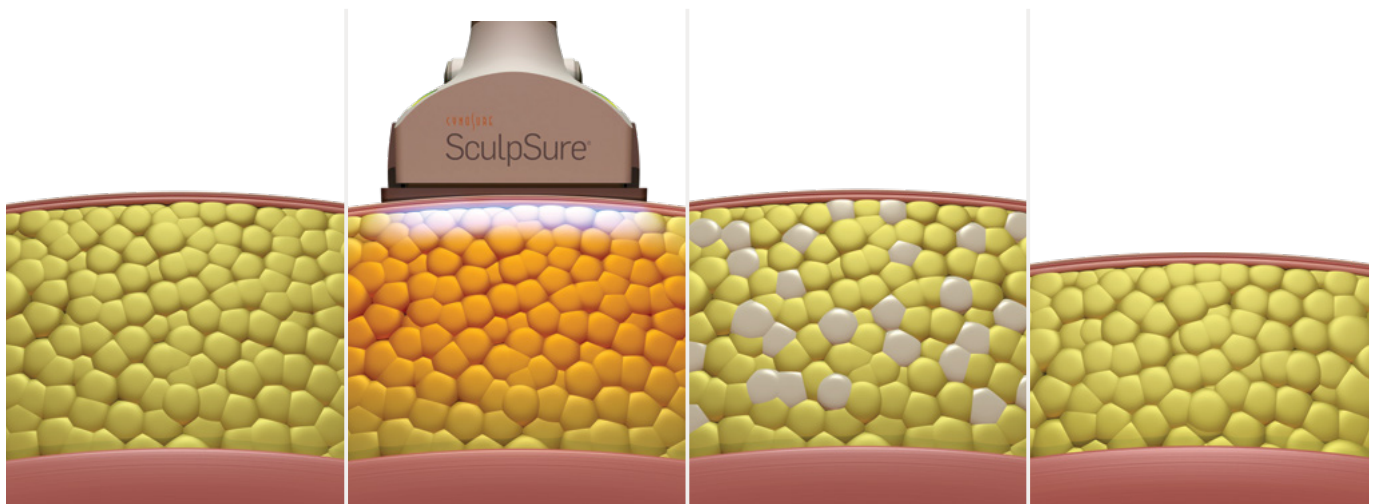
### TREATMENT AREAS

- ✓ Submental
- ✓ Back
- ✓ Flanks
- ✓ Abdomen
- ✓ Outer Thigh
- ✓ Inner Thigh





## PROVEN FAT REDUCTION WITHOUT SURGERY OR DOWNTIME



SculpSure system's 1060nm wavelength technology has a high affinity for subcutaneous adipose tissue.

The laser raises the temperature of adipose cells between 42° and 47°C, damaging their structural integrity.

Over the next three months, the body naturally eliminates the disrupted fat cells.

Disrupted fat cells are permanently eliminated from the body and will not regenerate.

SculpSure's natural feathering of the heat at the edges of the treatment area provides patients with natural-looking results without the risk of shelving or shark bites.

Using controlled energy modulation, SculpSure body contouring safely targets adipose tissue with minimal absorption in the dermis, leaving the skin's surface unharmed.

Throughout the treatment, Contact Cooling™ is used to help provide the ideal depth of penetration for adipose tissue and cool the skin's surface for added safety and patient comfort.

### NOW WITH

PLATINUM™  
— UPDATE —

- ✓ Guided Mode Technology
- ✓ Petite Mask for Submental
- ✓ Updated GUI Screen

100%

SculpSure Submental patient satisfaction rate<sup>2</sup>

73%

Of people are bothered by excess fat under the chin/neck<sup>5</sup>

86%

People bothered by excess weight on any part of their body<sup>7</sup>

94%

The Most Worth it non invasive body contouring procedure according to realself<sup>4</sup>

24.7%

Year over year increase in non-surgical fat reduction procedures<sup>5</sup>

\$4.3<sup>B</sup>

Revenue from body contouring treatments in 2017<sup>5</sup>

**WE PARTNER  
WITH YOU**



**CUSTOMER**



**ADVANCED  
CLINICAL PARTNER**

- Conducts comprehensive didactic and hands-on clinical training and facilitates staff onboarding
- Provides on-site coaching for patient consultations and assessments
- Provides ongoing education through online learning and webinars



**BUSINESS  
ACCOUNT MANAGER**

- Helps to facilitate the process and onboarding of product into Practice/Clinic
- Helps to initiate first clinical training
- Manages customer relationship on an ongoing basis



**FIELD SERVICE  
ENGINEER**

- Manages on-site installation, testing and monitoring
- Provides on-site technical support with full stock of parts on-hand to eliminate machine downtime
- Facilitates software updates on an ongoing basis



**SCULPSURE  
PRODUCT SPECIALIST**

- Supports initial onboarding of device with SculpSure marketing kit
- Provides customer marketing and promotional tools via Online Client Portal


Our team of committed experts strive to deliver the optimum experience for our customers, from our best in class servicing and clinical training to our dedicated Marketing team – we are here to support your business.


**SculpSure®**


# PRODUCT SPECIFICATIONS

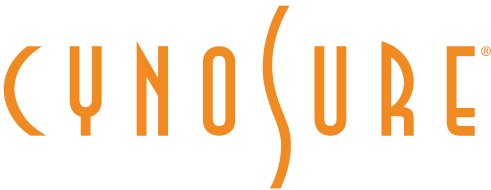
Wavelength	1060nm
Power Output	60 W (Per Applicator)
Electrical Requirement	Voltage: 200 - 240V (Single Phase) Current: 20A Frequency: 50/60Hz
Size	W - 61cm D - 89cm H - 173cm
Weight	140kgs

## CONNECT WITH US

 Cynosure Australia

 Cynosure Australia

 Cynosure Australia



### Contact Cynosure for further information about SculpSure

+61 2 9484 4546 | [infoaustralia@cynosure.com](mailto:infoaustralia@cynosure.com)

Cynosure (Australia) Pty Ltd  
14-16 Suakin St,  
Pymble NSW 2073

SculpSure is a non-invasive laser body contouring system designed to permanently eliminate fat cells from the chin (submental) area, abdomen, love handles (flanks), back, inner thighs and outer thighs. Individual results may vary and are not guaranteed.

© 2021 Cynosure, Inc. All Rights Reserved. Cynosure and SculpSure are registered trademarks of Cynosure, Inc. Contact Cooling is a trademark of Cynosure, Inc. Cynosure, Inc owns exclusive rights to photography. Use of photography without written permission of Hologic is prohibited.

\*Results vary by Patient and treatment area.  
\*\*Statistic based on Petite treatment

References:

1. Single treatment with an average reduction in fat volume as measured by MRI; Clinical and Histological Evaluations of a 1060nm Laser Device for Non-Invasive Fat Reduction - John W. Decorato., FACS. Rafael Sierra,PH.D., Westford, MA, 2014, 2. Clinical data on file, Cynosure.
3. Average patient discomfort rating of 3.7 on a scale of 1-10; Bass L, Doherty S. Non-Invasive Fat Reduction Of The Abdomen With A 1060nm Diode Laser. Paper presented at: 2015 Annual American Society for Laser Medicine and Surgery Conference; April 22-26; Kissimmee, FL.
4. Percentage accurate at 07/03/2019. Patient choice, realself.
5. Medical Insight, Inc. "Energy-based body shaping" July 2017, 5. American Society for Aesthetic Plastic Surgery. 2015 and 2016 Cosmetic Surgery aNational Data Bank Statistics.
6. ASAPS Statistics, 2017
7. American Society for Dermatologic Surgery (ASDS) 2018 Consumer Survey on Cosmetic Dermatologic Procedures.