

A black and white photograph of three diverse women with curly, long straight, and blonde hair, all smiling and wearing white tank tops. They are posed in a group, with one woman in the foreground and two behind her. The image is partially covered by a teal banner and a white geometric pattern on the right side.

CYNOSURE®

Elite *iQ*TM

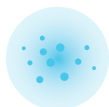
PERSONALISED HAIR REMOVAL



THE TREATMENTS



PERMANENT
HAIR REDUCTION



REDNESS



FACIAL WRINKLES



FACIAL AND
LEG VEINS



BENIGN PIGMENTED
LESIONS



SKIN
REJUVENATION



PSEUDOFOLLICULITIS
BARBAE (RAZOR BUMPS)



ONYCHOMYCOSIS-
NAIL FUNGUS TREATMENT

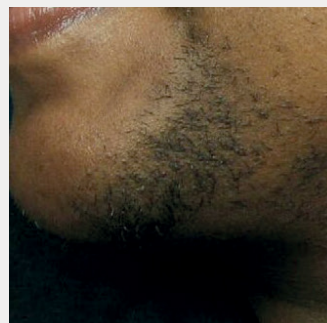
BENEFITS

- Fast treatments to maximise potential ROI
- Safe and effective treatments
- Treat all skin types, including tanned skin
- Easy to use

Elite *iQ*TM

THE PROOF IS IN THE PATIENTS

BEFORE & AFTER



BEFORE

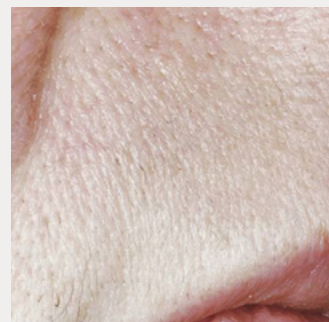


AFTER 2 TX

Courtesy of WIFH

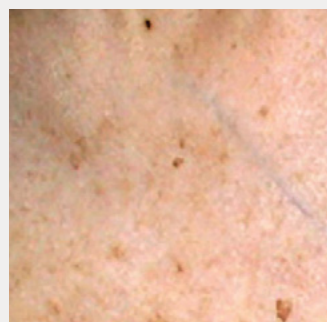


BEFORE

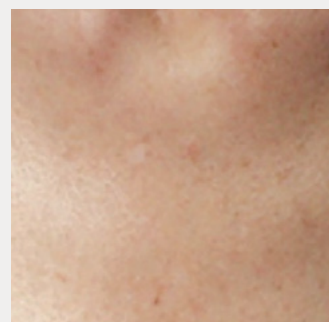


AFTER 3 TX

Courtesy of D. McDaniel, MD

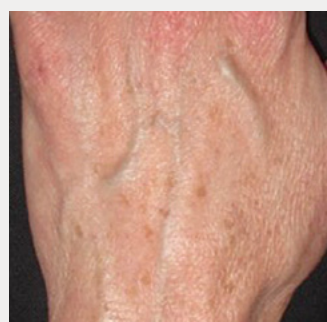


BEFORE

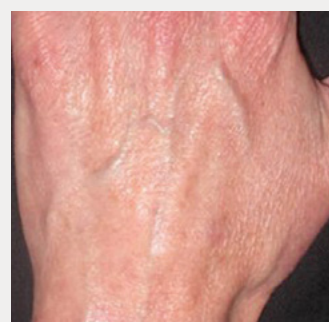


AFTER 2 TX

Courtesy of C. Nanni, MD



BEFORE



AFTER 3 TX

Courtesy of S.Doherty, MD

THE WORLD'S FIRST ALEXANDRITE-ND:YAG SYSTEM **JUST GOT BETTER**

Elite *iQ*[™]

The Elite iQ is a highly versatile, dual-wavelength aesthetic platform enabling practitioners to perform many of the most requested aesthetic treatments.

iQ: Patented Skintel and intuitive user interface

POWER: Treat more patients faster with higher max energy; +19% Alexandrite, +43% Nd:YAG*

VERSATILITY: Skin and hair treatments in one device

STYLE: Modern device and improved user experience

Minimise treatment effort with light, ergonomic hand pieces

Large, 33.8 cm (13.3") touch screen with tilt and swivel

Skintel calibration port conveniently located

Easily manoeuvre device with wrap around handle

Match your practice aesthetic with adjustable, 6-colour LED logo & back-lit handle



Flat-top and internal drawer for storage



INTUITIVE USER INTERFACE WITH DASHBOARD DESIGN

Save your favourite settings for future use

Built-in treatment guidance to help determine hair removal test spot settings



High treatment versatility with adjustable pulse width, fluence, and repetition rate

Easily see the active wavelength with dynamic screen lighting

SKINTEL® THE INDUSTRY'S ONLY MELANIN READER™

- Measures melanin content live to better guide treatment test spot settings
- Finds objective melanin reading which corresponds to skin phototype
- Provides treatment confidence



**WE PARTNER
WITH YOU**



CUSTOMER



**ADVANCED
CLINICAL PARTNER**

- Conducts comprehensive didactic and hands-on clinical training and facilitates staff onboarding
- Provides on-site coaching for patient consultations and assessments
- Provides ongoing education through online learning and webinars



**BUSINESS
ACCOUNT MANAGER**

- Helps to facilitate the process and onboarding of product into Practice/Clinic
- Helps to initiate first clinical training
- Manages customer relationship on an ongoing basis



**FIELD SERVICE
ENGINEER**

- Manages on-site installation, testing and monitoring
- Provides on-site technical support with full stock of parts on-hand to eliminate machine downtime
- Facilitates software updates on an ongoing basis



**ELITE iQ
PRODUCT SPECIALIST**

- Supports initial onboarding of device with Elite iQ marketing kit
- Provides customer marketing and promotional tools via Online Client Portal

Our team of committed experts strive to deliver the optimum experience for our customers, from our best in class servicing and clinical training to our dedicated Marketing team – we are here to support your business.

Elite **iQ**TM

PRODUCT SPECIFICATIONS

System Type	Alexandrite	Nd:YAG
Wavelength	755 nm	1064 nm
Pulse Width	0.5–300 msec	0.5–300 msec
Maximum Fluence Per Spot Size*		
24 mm	13 J/cm ²	20 J/cm ²
22 mm	16 J/cm ²	24 J/cm ²
20 mm	19 J/cm ²	28 J/cm ²
18 mm	25 J/cm ²	35 J/cm ²
15 mm	35 J/cm ²	50 J/cm ²
12 mm	50 J/cm ²	80 J/cm ²
10 mm	75 J/cm ²	110 J/cm ²
7 mm	150 J/cm ²	230 J/cm ²
5 mm	300 J/cm ²	450 J/cm ²
2.5 mm	600 J/cm ²	600 J/cm ²
Maximum Rep Rate	Up to 10 Hz	
Aiming Beam	Green	
Electrical Requirements	200/220 VAC, 30A	
Size (HxWxD)	125 cm x 45 cm x 101 cm	
Weight	120 kg	

* Compared to previous generation devices

CONNECT WITH US

 Cynosure Australia  Cynosure Australia  Cynosure Australia



Contact Cynosure for further information about Elite iQ

+61 2 9484 4546 | infoaustralia@cynosure.com

Cynosure (Australia) Pty Ltd
14-16 Suakin St,
Pymble NSW 2073